



Fire Safety

How to respond to fire?

- If you see a fire, shout 'FIRE' to warn your family & neighbours;
- If there is a fire in your house, leave immediately;
- Smoke is poisonous, to avoid smoke inhalation get down low;
- Teach your children how to escape so they escape unassisted in the event of fire;
- Call civil defence immediately, do not re-enter a burning house;
- If your clothes catch fire, cover your face with your hands, drop to the ground and roll until the flames are extinguished;
- If somebody is on fire cover them with a wet blanket.



Using a Fire Extinguisher

- Pull the pin from the fire extinguisher;
- Aim the hose at the base of the fire;
- Squeeze the handle of the fire extinguisher;
- Sweep the nozzle from side to side along the base of



What to do in Case of Burns?

Treat burns immediately by seeking medical attention from your nearest doctor, hospital or clinic.



While waiting for medical attention

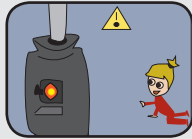
- Immerse the burn in cool (not cold) water for at least 10 minutes;
- Lightly cover the burn with a gauze bandage or a clean dry cloth (not wool);
- Do not apply any creams, ointments, sprays or toothpaste as they can make the burn worse;
- Do not touch blisters that have formed.



Red Cross: 140
Civil Defense: 125

Child Safety

- Do not allow children to be within 1 meter of a heater or a stove to prevent burn injuries;
- Always watch your children, do not leave them unattended;
- The heaters should be placed away from the edges of the tent.
- Chimney outlets should always go through a solid wall or a fire proof plate.



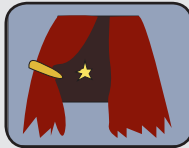
During sleep Safety

- Always turn off the heater/ stove before you go to sleep.
- If the weather was too cold, you have to keep cautious and pay attention to the heater/ stove.
- Plug out electrical items before you go to sleep.



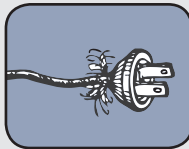
Ventilation Safety

- Ensure there is adequate ventilation when using a heater/ stove;
- Avoid smoking inside the tent.



Electrical Safety

- Avoid placing electrical cables where they can be damaged, such as under furniture, under carpets or doors;
- Avoid placing electrical cables near plastic sheets.



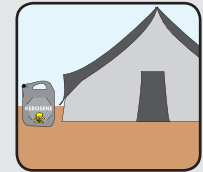
Cooker Safety

- Stay close to stove while frying, grilling or boiling food;
- Do not hold a baby while cooking;
- Do not leave the fire on inside the tent when you leave it.
- Keep flammable materials at least 1 meter away from fire source;
- Ensure you turn off heater/stove when you leave;
- Keep lamps 15 cm. away from tent sheets.



Stove/ Heater Safety

- Ensure that the heater/ stove is switched off before you refill it with kerosene;
- Do not overfill the heater/ stove;
- Place the kerosene container in a secure location away from the heater/ stove;
- Do not burn garbage close to tent.



Candle Safety

- Candles should be fixed in a lamp or glass bottles surrounded by water;
- Never leave an open fire/ flame inside the tent.

